

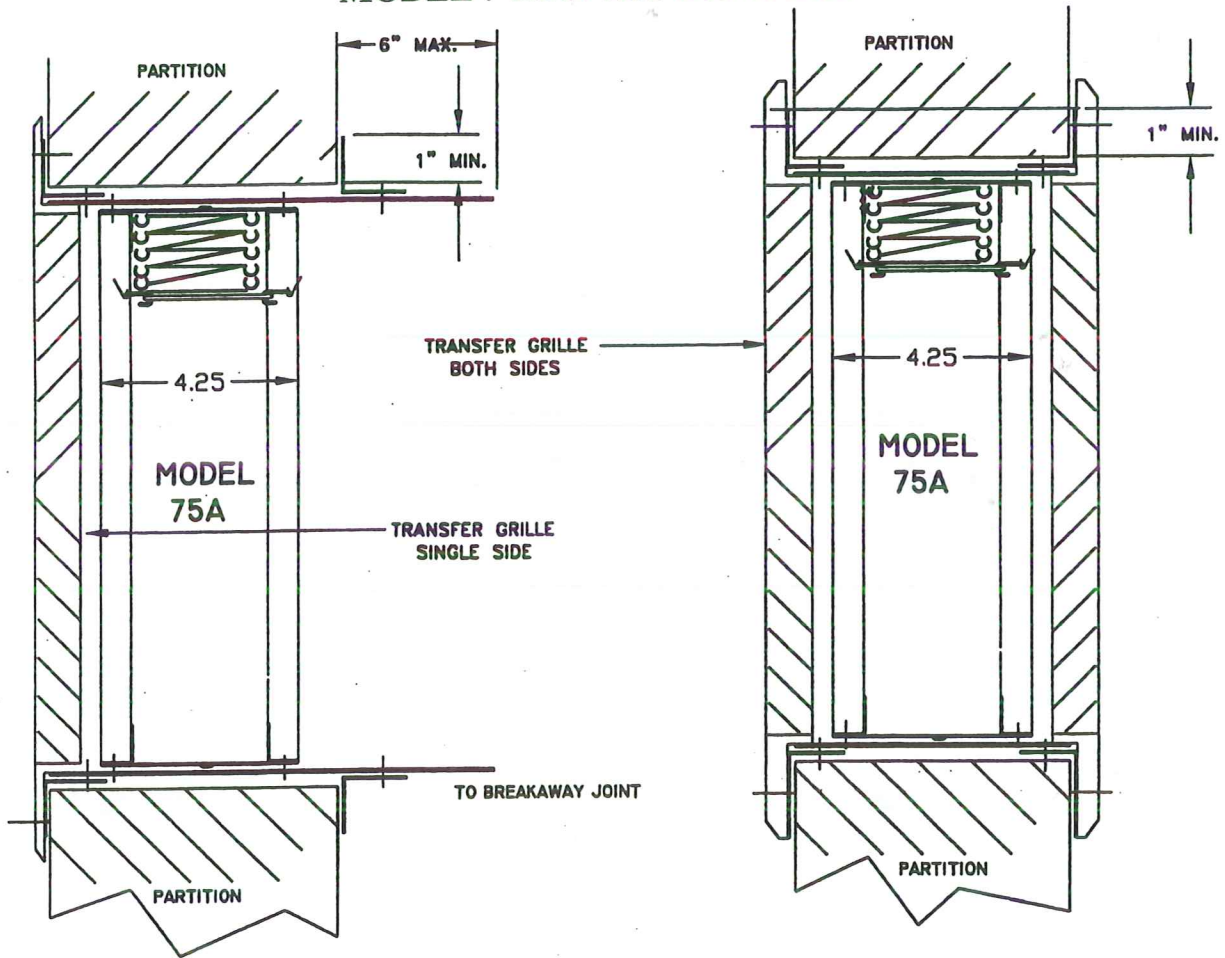


Air Management Inc.

DAMPER INSTALLATION INSTRUCTIONS

TRANSFER OPENINGS AND DUCT TERMINALS FOR 1-1/2 HOUR AND 3 HOUR CURTAIN FIRE DAMPERS

MODEL : AMI-75A DAMPERS

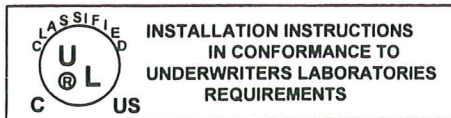


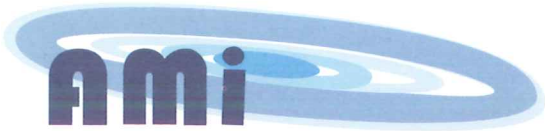
1. Perimeter mounting angles to be a minimum of 1-1/2 x 1-1/2 x 16 GA on dampers 36 x 50 and smaller. For dampers greater than 36 x 50, angles to be a minimum of 1-1/2 x 1-1/2 x 14 GA.

2. Grille to flange fasteners cannot penetrate the fire wall.

3. Secure angles to sleeve only, so as to frame the wall opening. Fasten to the sleeve only using the same means as required for fastening the damper to the sleeve.

4. Grille to flange attachment by means of 1/4" dia. pop rivets, #8 sheet metal screws or #8 bolts and nuts. Fasteners to be plated steel or stainless steel, minimum two fasteners per side.



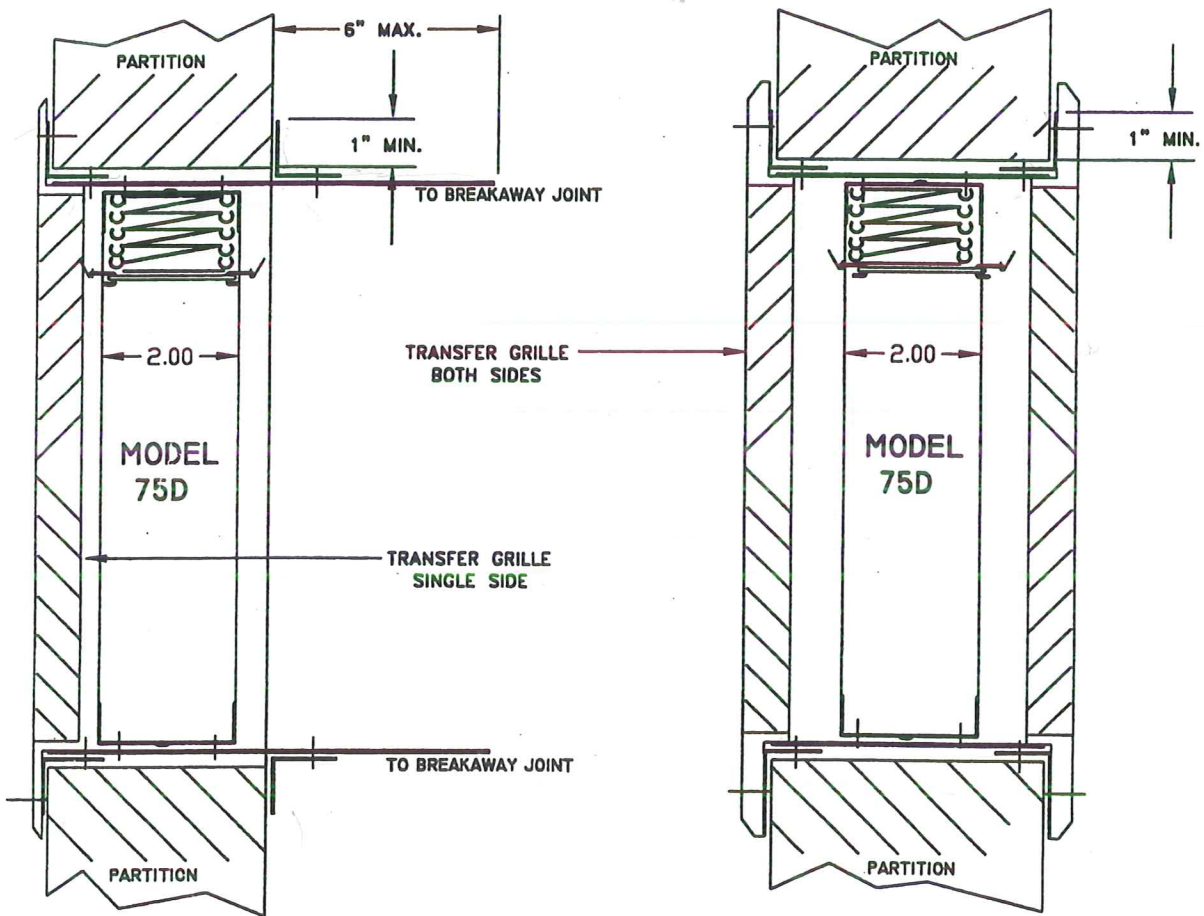


Air Management Inc.

DAMPER INSTALLATION INSTRUCTIONS

TRANSFER OPENINGS AND DUCT TERMINALS FOR 1-1/2 HOUR AND 3 HOUR CURTAIN FIRE DAMPERS

MODEL : AMI-75D DAMPERS



1. Perimeter mounting angles to be a minimum of 1-1/2 x 1-1/2 x 16 GA on dampers 36 x 50 and smaller. For dampers greater than 36 x 50, angles to be a minimum of 1-1/2 x 1-1/2 x 14 GA.

2. Grille to flange fasteners cannot penetrate the fire wall.

3. Secure angles to sleeve only, so as to frame the wall opening. Fasten to the sleeve only using the same means as required for fastening the damper to the sleeve.

4. Grille to flange attachment by means of 1/4" dia. pop rivets, #8 sheet metal screws or #8 bolts and nuts. Fasteners to be plated steel or stainless steel, minimum two fasteners per side.

